

# Bullet-Resistant Window Shades & Door Shields

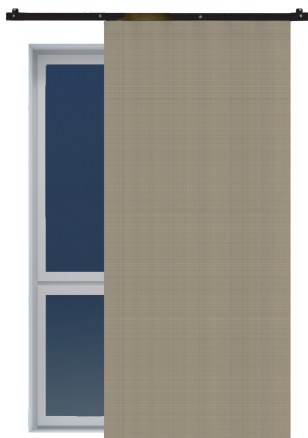
- Protects against the most common variants of: 9mm, .357, .45, 10mm, .44 Mag
- UL752 Level 2 and 3 certified
- NFPA 701 certified flame resistance
- Easy installation, minimal disruption
- Motorized or manual control
- Can be wired to activate with an existing alarm system
- Large format and tailored sizing
- Customizable colors, patterns, and fabrics



- ✓ Schools and Universities
- ✓ Government and Municipal
- ✓ Places of Worship
- ✓ Commercial Businesses



Roll-Up  
Window Shades



Curtains on  
Sliding Panels



Roll-Up  
Door Shields



Fixed Panel  
Door Shields



Hallway and Blast  
Debris Barriers

# Innovative Protection Solutions for a Safer World



## Customizable to Perfectly Match Your Existing Décor

- Cover fabrics and sheet metal fascia available in a standard pallet of colors



- Fabric choices and colors fully customizable upon request



- Custom printed patterns also available

## Roll-Up Shades and Shields

- Window and door covers deploy like a conventional motorized window shade from above the frame
- Motor controls will function with a wall switch, wireless remote, or by connecting to an existing alarm system
- For added stability on smaller windows/doors, outdoor use, and recommended applications, two types of retention devices can secure the bottom of the covers:
  - Cable guides
  - Locking hem bars



Mounts above the window or door

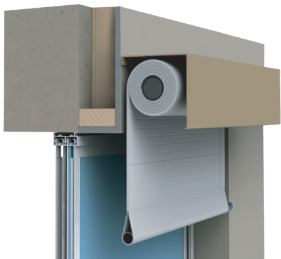


Cable guide retention

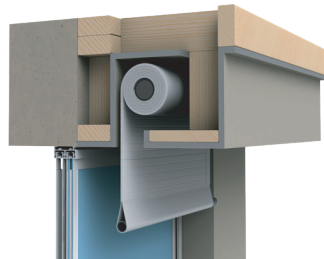


Locking hem bar retention

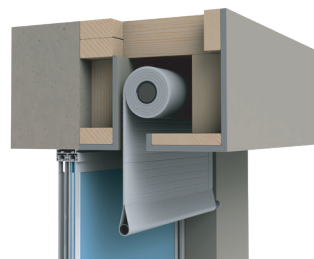
## Mounting Options



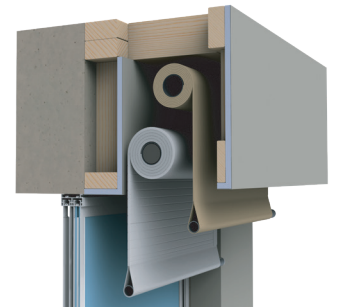
Above the door/window frame



In a soffit



In the ceiling



With a secondary designer shade

SECURITY



LISTED



US 11,585,640 B1  
US 12,078,456 B1



MADE IN USA